



BULLETIN

October–December 2018

The City of Prague Museum
Na Poříčí 52, Prague 8 – Florenc



www.muzeumprahy.cz

The City of Prague Museum

Headquarters: Kožná 1, Prague 1, tel.: 221 012 911, e-mail: muzeum@muzeumprahy.cz
www.muzeumprahy.cz

MUSEUM'S MAIN BUILDING

Na Poříčí 52/1554, Prague 8 – Florenc, tel.: 224 816 772–3

Opening Hours: daily except Mondays, 9 am–6 pm

Last Wednesday of each month: 9 am–8 pm

27–28 October: free admission

Public holidays: 28 October and 17 November: 9 am–6 pm

Christmas season: 24 December 9 am–2 pm, 25–26 December 10 am–6 pm,

27–30 December 9 am–6 pm, 31 December 10 am–2 pm, 1 January 10 am–6 pm

PERMANENT EXHIBITIONS

Prague in Prehistory

Medieval Prague

Prague at the Turn of Modern Era (1437–1620)

Baroque Prague (1620–1784)

Langweil's Model of Prague of 1826–1837 – a unique handmade cardboard model of Prague

Museum for Children and Langweil's ABCs of Sightseers – a haptic exhibition

EXHIBITIONS

Golden Prague 5 December 2018 – 31 March 2019

The 2nd half of the 19th century was the period of exceptional urban, architectural, and technical upswing of Prague, the crucial stage of its transformation from a provincial town of the Habsburg Monarchy into a busy metropolis of the newly awakened nation abounding with confidence as well as cultural and economic strength. The Golden Prague exhibition introduces visitors to Prague during the 1860s–1880s, presenting its transformation through illustrations and texts of Czech magazines Zlatá Praha (Golden Prague), Květy, and Světozor of that time. A book of the same name will be published.

Prague 1848→1918 13 June 2018 – 24 February 2019

The exhibition presents two cardinal moments in the history of Prague – the events of 1848, mainly the Pentecostal Uprising, and the declaration of independent Czechoslovakia on 28 October 1918 including the reflections of Prague situation that preceded it.

Strašnice... the garden of Prague, the gateway for armies...

25 April – 4 November 2018

The eighth exhibition from the City of Prague Museum project about the suburbs of Prague. Situated in the Prague foreland, Strašnice was afflicted by many sieges and wars. Originally a small village on important trade routes, it grew during the 18th and 19th ct. After the mid-20th century, several significant enterprises (Tesla, Mitas, Jawa, Chirana) emerged in Strašnice and its environs. Almost the entire area of the Strašnice cadastre was developed back then.

EXHIBITION IN THE LECTURE HALL

A Thousand Colours of a Fairy Tale 7 November 2018 – 7 January 2019

Illustrations with Christmas motifs by the Slovak artist Vladimír Král

OUTDOOR PANEL EXHIBITION

August 1968 in Prague

22 August – 2 December 2018

A wide range of photographs, posters, and other printed materials from the City of Prague Museum's collection present the turbulent times in Prague in August 1968. The invasion of five countries of the Warsaw Pact to Czechoslovakia halted the initiated reforms in society. August 2018 marks its 50th anniversary.



OBJECT OF THE SEASON

Group Find of Ground Stone Tools in Ruzyně

1 October 2018 – 1 January 2019

A previously unknown site with traces of settlement from various prehistory stages was discovered during rescue archaeological research in Prague-Ruzyně during the construction of the Prague Ring Road in 1999. A wall niche of a settlement pit from the Neolithic revealed a group of ground stone tools – axes, wedges, their semi-finished parts, and a whetstone. This finds dates from 4800–4500 BC as indicated by the fragments of the Stroked Pottery Culture.

HOUSE AT THE GOLDEN RING

Týnská 630/6, Prague 1 – Old Town

Opening Hours: daily except Mondays, 9 am–8 pm, 27–28 October: free admission

Public holidays: 28 October and 17 November: 9 am–8 pm

Christmas season: 24 December 9 am–2 pm, 25–26 December 10 am–6 pm,

27–30 December 9 am–8 pm, 31 December 10 am–2 pm, 1 January 10 am–6 pm

EXHIBITION

Prague of Charles IV – A View of Medieval Town

The beginning of the exhibition focuses on Prague urbanism and its transformation during the 14th century, the time of Charles IV and the House of Luxembourg. The second part emphasises the life of medieval inhabitants. The videomapping of Charles Square is the exhibition's highlight. Further visualisations show the importance of the river, fords, and bridges as well as the administration of the Prague conurbation.



The Conserved Past

28 March – 21 October 2018

The exhibition seeks to present the visitors with the usually hidden work of conservators. The works on display abandon their usual position of beautiful and unique objects and become the mediators that illustrate the conservators' job. Apart from the skills of artists and artisans of bygone times, visitors may admire the skills and technologies of present-day conservators.



PODSKALÍ CUSTOMS HOUSE AT VÝTOŇ

Rašínovo nábreží 412, Prague 2, tel. 224 919 833

Opening Hours: daily except Mondays, 10 am–6 pm; 27–28 October 2018: free admission

Public holidays: 28 October and 17 November: 10 am–6 pm

Christmas season: 24 December closed, 25–30 December 10 am–6 pm, 31 December closed, 1 January 10 am–6 pm

PERMANENT EXHIBITION

Vanished Podskalí and Life on the Vltava

The Podskalí Customs House at Výtvoň is a Renaissance building with a 16th century timber storey in which a toll was collected on timber that was floated to Prague. The life of Podskalí raftsmen, timber traders, sand miners, ice diggers, and others whose life was connected with water is presented through historical photographs. The next part of the exhibition is dedicated to the history of raft and ship transportation near Prague.

VILLA MÜLLER

National Cultural Monument

Nad Hradním vodojemem 642/14, Prague 6 – Střešovice

Tel.: 224 312 012, e-mail: vila.muller@muzeumprahy.cz

A world-famous structure of the avant-garde architect Adolf Loos. Opening Hours: Tue, Thu, Sat, Sun. October tours: 9 am, 11 am, 1 pm, 3 pm, 5 pm, November/December tours: 10 am, 12 noon, 2 pm, 4 pm. Christmas season: 24–31 December: regular hours, 1 January: tours at 2 and 4 pm. Please book online at www.muzeumprahy.cz. Guided tours only. Max. number of visitors per group: 7.

The Villa Müller ticket office is in the gallery of the Norbertov Study and Documentation Centre, Nad Hradním vodojemem 53/13, Prague 6.

VILLA ROTHMAYER

Cultural Monument

U Páté baterie 896/50, Prague 6 – Břevnov

Tel.: 224 312 012, e-mail: vila.muller@muzeumprahy.cz. The villa was owned by the architect Otto Rothmayer, a follower and colleague of Josip Plečnik. Opening Hours: Tue, Thu, Sat, Sun. October tours: 9 am, 11 am, 1 pm, 3 pm, 5 pm, November/December tours: 10 am, 12 noon, 2 pm, 4 pm. Christmas season: 24–31 December: regular hours, 1 January: tours at 2 and 4 pm. Please book online at www.muzeumprahy.cz. Guided tours only. Max. number of visitors per group: 7.

NORBERTOV STUDY AND DOCUMENTATION CENTRE

Nad Hradním vodojemem 53/13, Prague 6 – Střešovice, tel. 233 323 997

Gallery Opening Hours: Tue, Thu, Sat, Sun 10 am–6 pm **Research Centre** Open upon prior agreement. Tel.: 233 323 998, e-mail: vila.studium@muzeumprahy.cz

EXHIBITIONS

Plečnik House: The Architect's Experimental Hotbed

28 June – 30 September 2018 – extended until 21 October 2018

The Prague audience has a great opportunity to visit the house of the architect Jože Plečnik in Ljubljana through an exhibition held in the Norbertov Study and Documentation Centre. The Ljubljana Museum, which is in charge of Jože Plečnik's house, has devised this travelling exhibition. It describes the arduous renovation process of this modern architecture monument which opened in 2015. The historical black and white photographs are supplemented with the recent colour photos of the house and the original materials from Plečnik's collection.

Božena Horneková/Rothmayerová and Alice Masaryková. A Ward and a Mentor (1926–1939)

1 November 2018 – 29 September 2019

Marking the 100th anniversary of the birth of Czechoslovakia, the exhibition focuses on the relationship of two remarkable female culture figures of the 1920s and 1930s – the textile artist Božena Horneková/Rothmayerová and the presidential daughter Alice Masaryková. Based on the surviving correspondence and archival materials, various areas of Alice Masaryková's activities in which Božena Horneková/Rothmayerová participated, either directly or indirectly, are presented.

Lecture

Please book online at www.muzeumprahy.cz.

15 October 2018 Restoring Eileen Gray's Villa E-1027 and Clarifying the Controversies

A lecture of Tim Benton, Professor Emeritus in Art History, on the French modernist Villa E-1027 designed by the Irish architect Eileen Gray in 1929. The lecture, which is part of the Iconic Houses European Lecture Tour, is in English.

CTĚNICE CHATEAU

Bohdanečská 259/1, Prague 9 – Vinoř

Tel.: 286 001 366, e-mail: ctenice@muzeumprahy.cz, www.muzeumprahy.cz

Getting here: Metro B Line to Palmovka stop or metro C Line to Letňany stop, buses No. 185 (Vinořský hřbitov direction) and 302 (Přezletice–Kocanda direction) to Ctěnice stop. Open Tue–Sun 10 am–6 pm, the park is open daily 8 am–10 pm

27–28 October 2018: free admission

Public holidays: 28 October and 17 November: 10 am–6 pm

Christmas season: 24 December 10 am–1 pm, 25–26 December 10 am–4 pm,

31 December 10 am–1 pm, 1 January 10 am–4 pm

PERMANENT EXHIBITIONS – GROUND FLOOR

Ctěnice Chateau / History, Building Development and Reconstruction

History of Vinoř / From Prehistoric Times to the 20th Century

PERMANENT EXHIBITION – 1st FLOOR OF THE CHATEAU

Crafts in Guilds

The History of Craftsmen's Association from the Middle Ages to the Present

Introducing the history of crafts and guild association, the permanent exhibition Crafts in Guilds presents one of the world's largest collections of guild artefacts which is administered by the City of Prague Museum; the collection comprises more than 600 items.

EXHIBITION – GROUND FLOOR

The Fireflies of the Architect Zdeněk Podhůřský

23 October 2018 – 3 March 2019

The charming puppets on display which appeared in TV bedtime stories (The Fireflies, The Adventures of Dunno and His Friends, The Stories of the Chocolate Man), drawings, sketches, calendar puppets, working photos, and information texts remind one of this draughtsman and artist's brilliance. The puppets from the last incomplete animated series inspired by the Greek legends and myths are also presented as well as Hannibal, Giant Goliath with his tiny defeater David, and other mythical figures. An artist and puppet workshop is open for visitors.

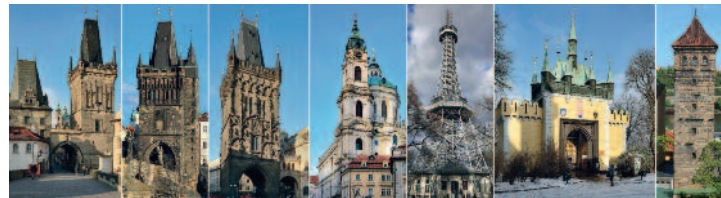
PERMANENT EXHIBITION – GRANARY EXHIBITION HALL

Prague-Těšnov Station / Back in Operation

The permanent exhibition presents an extinct station of Prague as a model railway (HO scale 1:87) and a locomotive depot. The exhibition gives visitors a chance to get an idea about the most beautiful station building in Prague which was built between 1872 and 1875. A 3D model of the building including its remarkable sculptural decoration was printed based on the original technical drawings.

PRAGUE TOWERS

27–28 October 2018: free admission



Petřín Observation Tower

Petřínské sady, Prague 1

Christmas season: 24 December 10 am–3 pm, 25–26 December 10 am–6 pm, 27–31 December 10 am–7 pm, 1 January 12 noon–6 pm

PERMANENT EXHIBITION

Petřín – A Place to Walk, Enjoy the View, and Learn about Quarrying

Mirror Maze on Petřín Hill

Petřínské sady, Prague 1

Christmas season: 24 December 10 am–3 pm, 25–26 December 10 am–6 pm, 27–31 December 10 am–7 pm, 1 January 12 noon–6 pm

PERMANENT EXHIBITION

The Fight of Students Against the Swedes on Charles Bridge in 1648 – diorama, a monumental painting (8×10 m), which was made by the brothers Adolf and Karel Liebscher in 1891. **The diorama is still under restoration.**

Old Town Bridge Tower

Charles Bridge, Prague 1 – Old Town

Christmas season: 24 December 10 am–3 pm, 25–26 December 10 am–6 pm, 27–31 December 10 am–7 pm, 1 January 12 noon–6 pm

PERMANENT EXHIBITION

The Tower Mystery For its architectural and artistic aspects, the Old Town Bridge Tower ranks among the greatest highlights of High Gothic structures of Charles IV, not only in Prague but also in (Central) Europe. The exhibition presents unquestionable facts as well as various hypotheses. A small presentation of objects retrieved from the Vltava, including the latest findings of the unique riverbed research focused on the riverbed mapping, is installed in the tower's underground.

Town Belfry by St Nicholas Church

Malostranské nám. 556/29, Prague 1 – Lesser Town

The belfry is closed for technical reasons from 17 September to 31 December.

New Mill Water Tower

Nové mlýny 827/3A, Prague 1 – New Town

Opening Hours: Tue–Sun 9 am–12 noon, 12.30 pm–6 pm

27–28 October 2018: free admission

Public holidays: 28 October and 17 November: 9 am–12 noon, 12.30 pm–6 pm

Christmas season: 24 December 10 am–12 noon, 12.30 pm–2 pm,

25–30 December 10 am–12 noon, 12.30–6 pm, 31 December 10 am–12 noon,

12.30–2 pm, 1 January 10 am–12 noon, 12.30 pm–6 pm

PERMANENT EXHIBITION

Prague on Fire The exhibition presents the threat of fire for Prague many centuries ago – as well as in recent times – and the methods used by the metropolis residents to defend against the destructive element. The exhibition concept is based on digital reproductions of Prague, disastrous fires in Prague, and fire fighters with their gear and tools. In addition, visitors will have a chance to experience the terrifying moments during vast fires in medieval and early modern Prague via sensual illusions.

Powder Tower

nám. Republiky 5, Prague 1 – Old Town

Christmas season: 24 December 10 am–3 pm, 25–26 December 10 am–6 pm, 27–31 December 10 am–7 pm, 1 January 12 noon–6 pm

Lesser Town Bridge Tower

Charles Bridge, Prague 1 – Lesser Town

Christmas season: 24 December 10 am–3 pm, 25–26 December 10 am–6 pm, 27–31 December 10 am–7 pm, 1 January 12 noon–6 pm

The towers and the Mirror Maze opening hours: October: 10 am–8 pm, November and December: 10 am–6 pm



THE CITY OF PRAGUE MUSEUM

Headquarters: Kožná 1, Prague 1

tel.: 221 012 911, e-mail: muzeum@muzeumprahy.cz

www.muzeumprahy.cz

THE CITY OF PRAGUE MUSEUM PARTNERS

